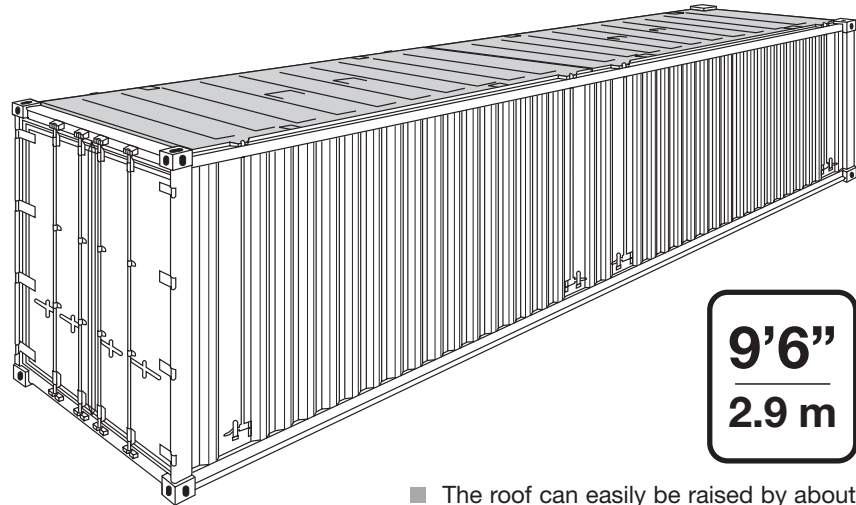


High Cube Hardtop Container

40'

ISO Size Type Code: 45 U6



9'6"
2.9 m

- The 40' hardtop container has particularly been constructed for:
 - long loads which cannot be transported in the 20' hardtop container
 - heavy loads
 - high and excessively high loads
 - loading, e.g. by crane, through roof opening and door side.
- With the roof removed and the door header swung out, it is much easier to load cargo using a crane via the door side.
- The roof can be removed by using a fork-lift. The weight of the steel roof is approx. 450 kg (990 lbs) each section.
- In case your cargo has overheight the roof sections can be lashed to a side-wall inside the container using only some 13 cm (5 1/8") of space.
- Floor Height 170 mm - 5mm (Ground level to interior floor surface)
- If required, we can provide disposable tarpaulins for the transport which can

be fastened to the walls on the outside using lashing devices.

- The hardtop container provides many lashing devices to fasten your goods. The lashing devices on the corner posts and on the longitudinal rails of the roof and floor are capable of bearing loads of up to 2,000 kg (4,410 lbs) each, and those in the middle of the side walls up to 500 kg (1,100 lbs) each. Lashing to the side walls can only be done after the roof has been closed.

- The roof can easily be raised by about 70 mm (2 3/4), using the roof locking devices so that the door-header can be swung out without removing the roof.
- This container type has been designed for heavy loads. Whilst considering the technical data (including the permissible spreaded load limitations) please bear in mind the prevalent weight restrictions for land transport.

Cigisped: ph: +39 010 8607214 +39 010 815873 - cigisped@cigisped.it - www.cigisped.it

High Cube Hardtop Container

Construction	Inside Dimensions				Weights			Capacity m ³ cu.ft
	Length mm ft	Width mm ft	Height		Max. Gross kg lbs	Tare kg lbs	Max. Payload kg lbs	
			Middle mm ft	Side mm ft				
9'6" high								
Steel container with corrugated walls, wooden floor and removable steel roof	12 020 39'5 ¹ / ₄ "	2 342 7'8 ¹ / ₈ "	2 693 8'10"	2 618 8'7"	30 480 67 200	4 900 10 803	25 580 56 394	75,8 2 677

Roof and Door Openings of Hardtop Containers

40'

Roof Openings

Length	Width
B Between gusset plates	C Max.
mm ft	mm ft

Door Openings

Width			Height	
F Max.	G At door header	H Between top rails	I Up to door header	K Up to top rail
mm ft	mm ft	mm ft	mm ft	mm ft

Roof lashed to sidewall

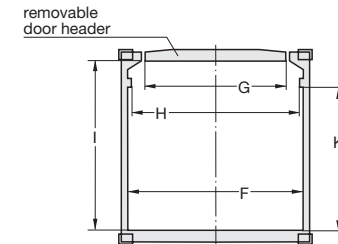
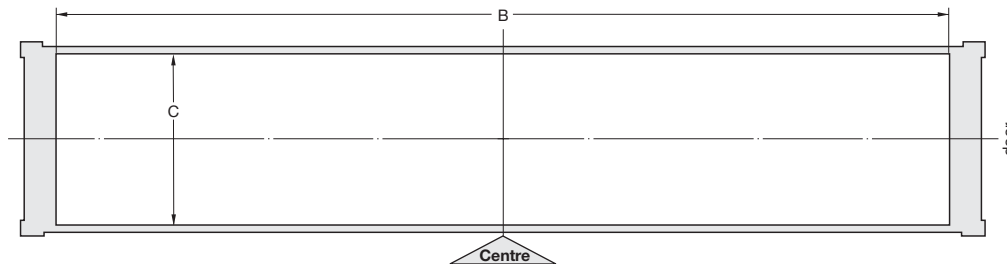
Reduced Inside Width		
Max.	Roof opening	Door opening
mm ft	mm ft	mm ft

9'6" high

11 724 38'5 1/2"	2 208 7'2 7/8"
---------------------	-------------------

2 336 7'8"	1 896 6'2 5/8"	2 208 7'2 7/8"	2 597 8'6 1/4"	2 525 8'3 3/8"
---------------	-------------------	-------------------	-------------------	-------------------

2 230 7'3 3/4"	2 163 7'1 1/8"	2 227 7'3 5/8"
-------------------	-------------------	-------------------



“Attention” internal height 2 541 mm when adjust bar inserted

Cigisped: ph: +39 010 8607214 +39 010 815873 - cigisped@cigisped.it - www.cigisped.it